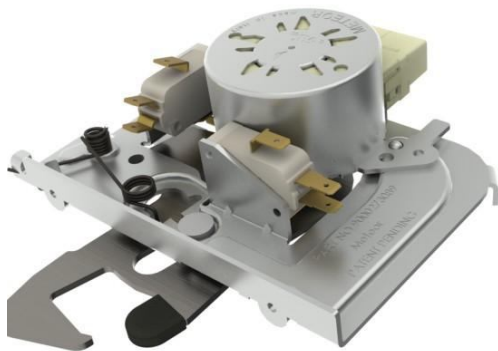


Presentation

The device is developed for built in ovens and cookers for domestic use that use the pyrolytic cycle, with temperatures of up to 480°C, to automatically clean the oven. International regulations prescribe that during this cleaning process the oven door should be locked with a device called a latch.

METEOR by utilising it's own gear motor has devised an innovative system called **LIP TYPE** (Patent Pending) that detects the door position when closed and locks the door during the pyro cycle.

A modern device that easily adapts to different oven structures and capable to respond all requirements related to door closing and oven door locking.



Technical description

A Structure

Compact structure entirely made of steel, capable of operating at temperatures up to T150°C.

The latch configuration allows use of up to 2 micro switches.

B Gear Motor

Gear motor operating temperature T150°C.

Approvals: IMQ - VDE - UL (USA) - CSA.

C Micro switches

Micro switches with operating temperatures of T125°C - T150°C and T200°C.

Approvals: IMQ - VDE - UL (USA) - CSA.

D Closing hook with “detection door” function

The door latch has been designed so the door detection function is integrated in the hook.

The market considers this solution an important priority allowing:

- 1) to better monitor the door closure, because it allows more precision in the axial tolerances of the oven door with the latch hook;
- 2) to reduce assembly line;
- 3) to reduce costs of the wiring dedicated to the door detection switch positioned separately to the door latch.

E Emergency release system

System allows emergency door opening in case of oven malfunction during clean cycle.

F Positioning of the door latch immediately behind the oven front face

It is possible to position the latch immediately behind the oven front.

G Compatibility and interchange ability with different electronic system

The door latch has been designed to operate with existing electric and electronic components.

H Construction and 100% check of the horizontal latch

The door latch is produced on an assembly line especially made for door latches. The assembly line has multiple automated stations dedicated to 100% testing of production.

I Testing of the latch directly on the oven assembly line

Compared to other systems the **METEOR** latch allows quick and effective test of the self clean cycle of an oven directly on the oven assembly line.

METEOR



METEOR sas
Via S. Anna, 3
I-31010 MARENO DI PIAVE (TV)
Phone +39.0438.4939
Fax +39.0438.493929
info@meteoritaly.com
www.meteoritaly.com
Part.IVA 04255770267