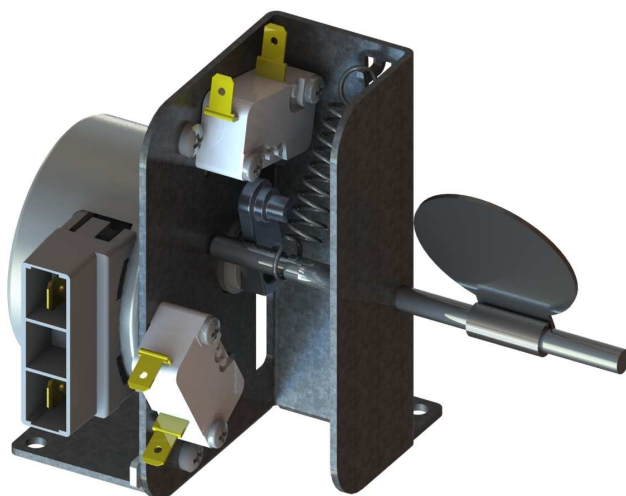


System Description

The **Actuator for butterfly valve** is a motorized device used in the ovens to control the steam flow inside the cavity.

The gear motor moves the valve, turning it to predetermined positions by means of a CAM, activating the micro switch position.

In this way, when the valve is in an **OPEN POSITION**, the flow of steam exits from the cavity, while with **CLOSED POSITION** the steam remains inside.



Technical specification:

Voltage	110V / 220-240V
Frequency	50-60 Hz
Power	From min 4W to 8W
Speed	From 2 to 40 Rpm
Insulation Class	F - H
Max Working Temperature	150° C

METEOR



METEOR sas
Via S. Anna, 3
I-31010 MARENO DI PIAVE (TV)
Phone +39.0438.4939
Fax +39.0438.493929
info@meteoritaly.com
www.meteoritaly.com
Part.IVA 04255770267